

MCC-3000MT

3D HD Medically Compliant Video Camera



A new dimension in medical imaging.

The Sony MCC-3000MT is a medically compliant HD video camera that provides exceptional HD picture quality for both 3D and 2D video. The MCC-3000MT consists of two compact camera heads with 3 one half-inch (1920 X 1080) Exmor™ CMOS sensors, each featuring over 2 million pixels, plus one CCU (Camera Control Unit). By combining Exmor image sensors with Sony's image processing technologies, the MCC-3000MT provides an excellent sensitivity of F10, a remarkable signal-to noise ratio of 54dB, and a wide dynamic range of 450%.

It's compact and light-weight design allows the camera's C-mount heads to be easily mounted on a surgical microscope* and integrated into a variety of medical systems.

Together with Sony's medically compliant 24-inch LMD-2451MT monitor and HVO-3000MT recorder, the MCC-3000MT is ideal for displaying and recording 3D/2D surgery applications.

- 3D/2D video
- ½ -inch type Exmor™ Full-HD CMOS Sensors
- Compact and Lightweight Camera Head Unit
- Various Shooting Modes
- RS-232C Interface
- Intuitive Front Panel Operation
- Flexible Selection of Camera Cables
- Compliant with applicable Medical Standards

*Optional adapter required



MCC-3000MT consists of two compact camera heads and one CCU (Camera Control Unit)

MCC-3000MT Specifications

Camera Head Unit	
Image Device	3-chip 1/2-inch type Exmor CMOS
Effective Picture Elements	1920 (H) × 1080 (V)
Lens Mount	C-mount
Optical System	F2.2 prism system
Sensitivity	F10 typical (in 1920 × 1080/59.94i mode)
Minimum Illumination	9 lx (in 1920 × 1080/59.94i mode, F2.2, +21 dB gain)
Connector	
Camera output	20pin (×1)
Camera Control Unit	
S/N Ratio	54 dB (Y) (typical)
Horizontal Resolution	1000TV lines (in 1920 × 1080/59.94i ; through HD-SDI)
White Balance	PRESET/MEMORY/ATW
AE	On/Off
AE Area	Multi/Large/Middle/Spot/Slit Selectable
Picture Profile	Picture Profile 1-6
Output Signals	HD-SDI, Composite
Color Bar Type	Multi/75%/100%/Off
Down Converter	Squeeze/Letterbox/Edge Crop
Serial Data	RS-232C
Connectors	
Composite output	BNC (×1)
HD SDI output	BNC (×2)
EXT SYNC input	BNC (×1)
Remote	D-sub 9-pin (×1)
General	
Mass	CHU : 3.2 oz (90 g) (×2) CCU : 9 lb 15 oz (4.5 kg)
Dimensions	CHU : 1 7/16 × 13/16 × 2 inches without projection (35 × 45 × 50mm) CCU : 7 7/8 × 3 1/2 × 13 1/2 inches without projection (200 × 88 × 341mm)
Power Requirements	DC 24 V
Input Current	1.5 A (inrush: 3.0 A)
Operational Temperature	32°F to 104°F (0°C to 40°C)
Storage Temperature	-4°F to 140°F (-20°C to 60°C)
Supplied Accessories	Tripod adapter (2) Tripod adapter fitting screws (8) Lens mount cap (2) Operating instructions Before Using This Unit (1) CD-ROM – Manuals for HD Video Camera (Operating Instructions in PDF) (1) Warranty Booklet (1)

Camera Head Units



CCU Front Panel



CCU Rear Panel



Optional Accessories



**CCMC-T20/CCMC-T15/
CCMC-T10/CCMC-T05**
Camera Cables

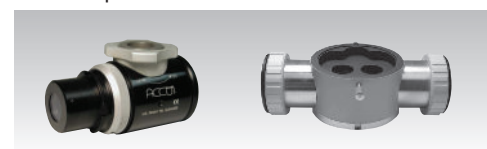


HVO-3000MT
3D HD Video Recorder



LMD-2451MT
3D HD Medical Monitor

Optional microscope adapter kits for stereoscopic 3D



Video Adapter (x2)

Beam Splitter

sony.com/medical

©2012 Sony Electronics Inc. All rights reserved. Reproduction in whole or in part without written permission is prohibited. All non-metric weights and measurements are approximate. Features and specifications are subject to change without notice. Sony, Sony make.believe, Exmor and their respective logos, are trademarks of Sony. All other trademarks are trademarks of their respective owners.

Caution: Federal (USA) law restricts this device to sale by or on the order of a physician or other appropriately licensed medical professional.
Caution: See product labeling for indications, contraindications, warnings, cautions and directions for use.

ME-MCC3000MT